

World University Rankings® Arab Region 2019

The Top 120 Universities in the Arab Region 2019





WUR 2019 ranks AU among the top 1000 universities worldwide.



"Top 50 Under 50" names AU as one of the top 150 young universities worldwide.



"Best Student Cities" lists Dubai/Sharjah/Ajman region as the 61st best student destination worldwide.



The Bachelor of Pharmacy degree program of Ajman University, College of Pharmacy and Health Sciences, has been granted Certification by the Accreditation Council for Pharmacy Education.



Engineering Accreditation Commission

Ajman University's Bachelor of Science programs in Biomedical Engineering and Electrical Engineering have been accredited by the Engineering Accreditation Commission of ABET.

QS World University Rankings® Arab Region 2019: Welcome



Selina Griffin
Rankings Manager
QS Quacquarelli Symonds

Dr. Shadi Hijazi
Senior Consultant
QSIU Consulting

Welcome to the QS World University Rankings: Arab Region 2019.

This year we are pleased to report that we have extended the number of universities we are ranking in the Arab Region to 120.

For this edition of the ranking, we have altered the methodology by introducing a new indicator. This new indicator was first trialled in the QS Latin America University Rankings and has now been incorporated into all of our other regional rankings, BRICS excluded. The International Research Network indicator combines robust research data from Elsevier's Scopus database with an international dimension, examining the international diversity of institutions with which the university has collaborated in its research. Weighting changes will be further outlined in the Methodology part of this supplement.

The methodology for the Arab Region ranking is now based on ten indicators, some of which you may recognise from our World University Rankings exercise, published annually in June. Academic and employer reputation form the cornerstone of this ranking, amounting collectively to 50% of the overall scoring

system. The status of the reputational indicators in our methodology reflect that in order to be considered a world-class university (even at a regional level), you should be thought of as one. The importance of employer reputation is also of considerable worth both to QS and to students who value their university studies due to the career benefits they might provide.

The other eight indicators making up the Arab Region methodology are: Faculty/Student ratio, Papers per Faculty, Citations per Paper, Staff with PhD, proportion of International Faculty and proportion of International Students, web impact and of course, our latest addition: International Research Network. More details about all of these indicators, what they mean, and how they are used can be found in the Methodology section of this supplement.

We hope that the 2019 edition of our Arab Region Rankings offers compelling, serviceable insight.



King Abdulaziz University

www.kau.edu.sa



RESEARCH EXCELLENCE IN MATHEMATICS

WITH OVER 170,000 STUDENTS,
WE ARE A BEACON OF KNOWLEDGE
WITH A RICH TRADITION OF DIVERSITY.

Future academics and enthusiastic post-graduate students will benefit from the high standard of teaching and research facilities KAU have to offer.

The Future. Inspired by research.

Jeddah, Saudi Arabia

QS World University Rankings Arab Region 2019: Methodology



Selina Griffin
Rankings Manager
QS Quacquarelli Symonds

For the QS Arab Region University Rankings 2019 we have added a new indicator and therefore offer a revised methodology.

This methodology differs from that used for the QS World University Rankings®. The unique approach adopted for the regional rankings is based on feedback collected from the region, the expert identification of those factors of most importance to the region's universities and other tertiary education stakeholders, and the availability of data. Like QS's other rankings, it examines university performance according to four pillars: teaching, research, employability and internationalization. This latest edition involves a new indicator that combines elements of both research and internationalization into one by examining the diversity of an institution's international research collaborations.

Ten indicators are used to form this regional university ranking:

INDICATORS

Global Reputation

ACADEMIC REPUTATION 30%

Results are derived from the annual survey conducted by QS, which is designed to evaluate the perceptions of academics worldwide regarding the best research institutions. For this 2019 edition, over 83,000 responses were recorded globally.

EMPLOYER REPUTATION 20%

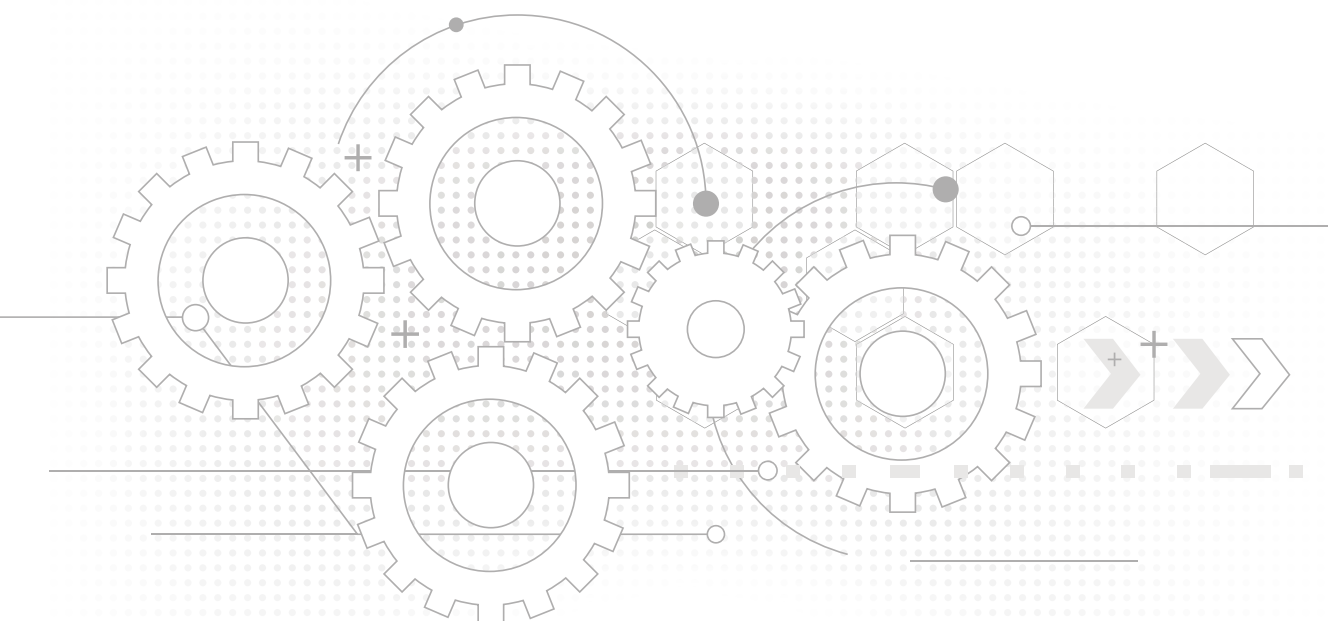
Results are derived from the annual QS Employer Survey, which gathers the views of employers around the world regarding the relative abilities of institutions to provide successful, employable graduates. For the 2019 edition, over 42,000 responses were analysed.

Research

CITATIONS PER PAPERS 5% / PAPERS PER FACULTY 5%

For the regional rankings we take a slightly different approach to that used for the overall QS World University Rankings®. We use two indicators to evaluate the research productivity - in the form of Papers per Faculty - and research impact, using Citations per Paper. As with the QS World University Rankings®, we are using a publications window of papers published between 2012-2016 and a six year citation window encompassing 2012 through 2017.

These indicators are calculated using data acquired from Elsevier's Scopus database. Furthermore, only those institutions producing more than 100 papers in the last five years are evaluated in the citations per faculty indicator. The rest of the data is treated in the same way as for the QS World University Rankings®: self-citations are excluded from the analysis, the paper and citations data are normalized, ensuring the citations achieved in each of the five broad faculty areas are weighted equally, and a variable affiliation cap is in place to exclude any anomalous results where a paper has an extraordinarily high number of affiliations for its field.



INTERNATIONAL RESEARCH NETWORK 10% NEW

Using Scopus data and the same publishing window as the rest of the research indicators, this new indicator first appeared in the QS Latin America University Rankings and has since been incorporated into the other regional exercises. The indicator uses the Margalef Index to assess the degree of international diversity in terms of research collaboration for each evaluated institution. This indicator uniquely combines research with internationalization to offer insight into university performance.

Teaching Commitment

STUDENT TO FACULTY RATIO 15%

This is the ratio between the number of academic staff and number of students. A higher number of teachers per student is an indirect indicator of institutional commitment to high-quality teaching. The weighting for this indicator has been reduced from 20% in previous editions to 15% to accommodate the International Research Network indicator.

STAFF WITH PHD 5%

The Staff with PhD is a proxy measure for teaching quality. It reflects a university's commitment to ensuring that they are acquiring faculty members with expertise in their field – a commitment that can be expected to lead to improved research and teaching alike.

These two indicators in tandem measure a university's commitment to facilitating high-quality interaction between teachers and students.

Internationalization

INTERNATIONAL FACULTY 2.5%

The international Faculty Index measures the proportion of faculty members at an institution that are international. It is a proxy measure for how internationally-attractive the university is to academic staff. Universities based in locations known for attracting high proportions of expatriates perform well here, such as those in Hong Kong and Singapore

INTERNATIONAL STUDENTS 2.5%

Similar in nature to the International Faculty Index, the International Students Index is based on the proportion of students that are international. It is a proxy measure for how internationally attractive the university is to students. Attracting international faculty and students can be challenging for institutions that are more nationally or regionally focused.

WEB IMPACT 5%

This indicator seeks to assess the effectiveness with which institutions are making use of new technologies. Baseline information is provided by the Ranking Web of Universities (www.webometrics.info), although the results are refactored to exclude the Excellence indicator, which is already considered in the metrics related to scientific research. The weighting for this indicator has been reduced from 10% in previous editions to 5% to accommodate the International Research Network indicator.

**We conduct world-class
research to discover the
cures of tomorrow**

Innovate with us



www.uaeu.ac.ae

Zayed bin Sultan Al Nahyan Center for Health Sciences - National Water Center - National Space Science and Technology Center - Emirates Center for Energy and Environmental Research - Roadway, Transportation and Traffic Safety Research Center - Khalifa Center for Genetic Engineering and Biotechnology - UAEU Center for Public Policy and Leadership – Emirates Center for Happiness Research – Emirates Institute for Learning Outcomes Assessment – Date Palm Development Research Unit – UAEU Science and Innovation Park



UniKL
UNIVERSITI
KUALA LUMPUR

“ Empowering Vocational and Technical Minds ”

Universiti Kuala Lumpur (UniKL) was established in 2002 under *Majlis Amanah Rakyat (MARA)*, a Malaysian agency under the Ministry of Rural and Regional Development (KKLW). UniKL provides graduates with the knowledge, skills and attitude required to contribute towards and play major roles in a globalised and knowledge-based economy.

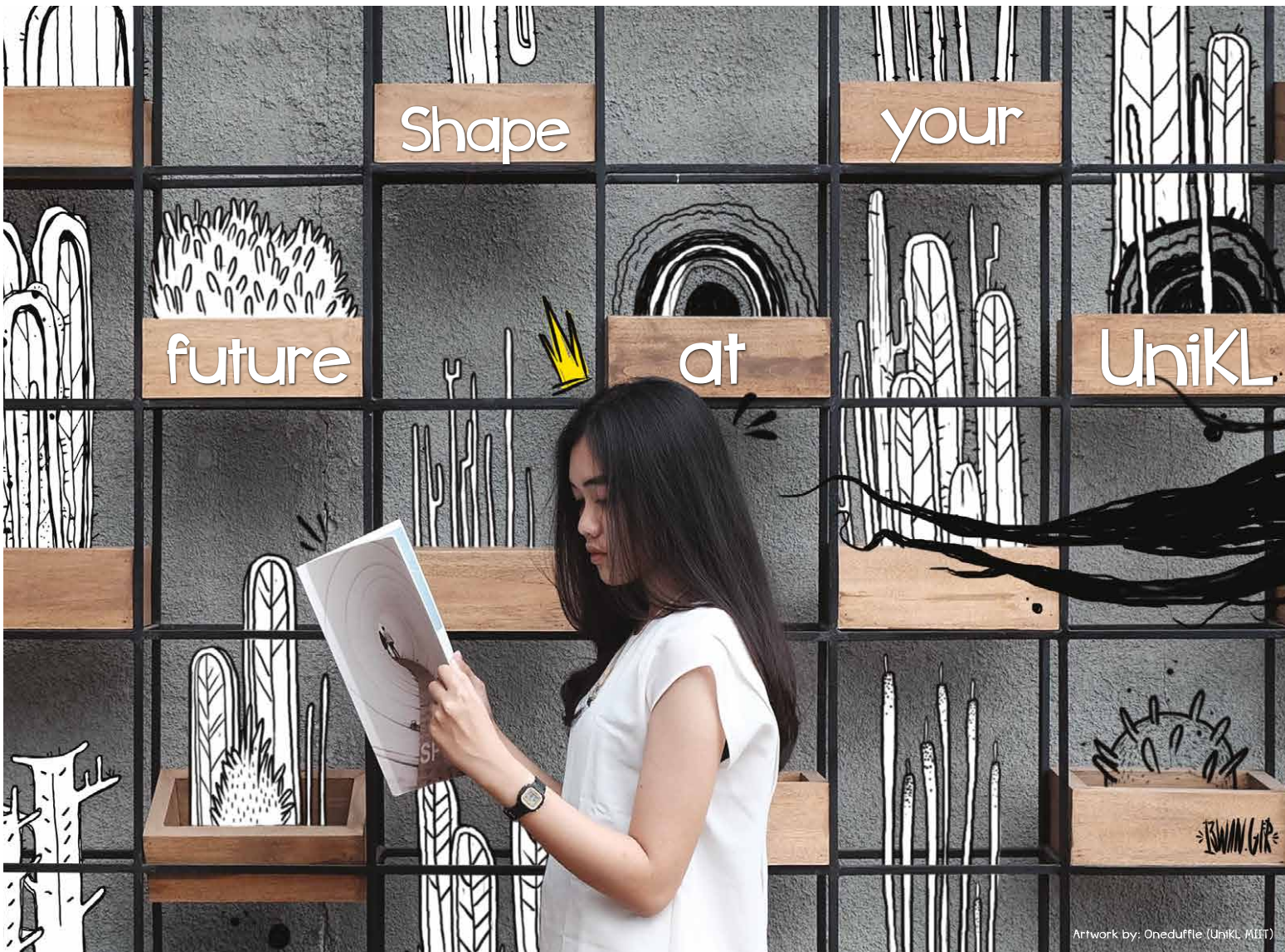
Having produced more than 48,000 graduates since its inception, UniKL strategically posits itself as a leading local institution for technical, vocational and entrepreneurial programmes. UniKL actively champions, markets and spread the message of **Higher Technical and Vocational Education and Training (HTVET)** in its programmes to truly become the apex of technical university for Malaysia.

The philosophy of the university is to offer programmes that meet demands of the global industry, and that students are equipped with all the required knowledge and hands-on industry experience via what is known as *Industrialmanship* - a concept to introduce UniKL students to industrial culture and real working environment from as early as Semester 1 up to the Final Semester, upon graduation and beyond.

UniKL City Campus where the Chancellery is housed, is located in the heart of Malaysia's capital and commerce area, boasting the tallest University Tower in the country - a 31-story building situated at the heart of the Golden Triangle of Kuala Lumpur. The other 11 campuses are spread all over Peninsular Malaysia where every campus has its own specialisation with the concept of **'One Campus, One Specialisation'**.

Beyond the general and technical education delivered on campus, UniKL delivers a competitive and dynamic vocational education through strong partnerships with industries and research institutions to apply and commercialise research findings. Today, the university has extensive collaborations with local and international businesses such as Microsoft, Citroen, Aero Bildung, CIMB, CISCO, Hyundai, Oracle and IBM.

As one of its initiatives to improve the delivery in technical education, UniKL has developed its UniKL value-based Higher Technical and Vocational Education and Training (HTVET) model. The four pillars of excellence are: Innovative Teaching and Learning, Quality Curriculum, Academic Professionalism, and Student Talent Enhancement. This model produces human capital who are innovation-driven, entrepreneurial, ethical and professionally skilled in science, technology and trades which is set to make Malaysia a high income nation.



UnikL
UNIVERSITI
KUALA LUMPUR

Universiti Kuala Lumpur

Where Knowledge is Applied and Dreams Realised



Industry Driven
Curriculum



Professional
Certification



Expert
Guidance



Study/Work 1
Semester
Abroad



Education
Financing



Career
Guidance

Specialisations

It, Multimedia, Business Technology

Medical & Allied Health Sciences

Chemical & Bioengineering

Industrial Maintenance, Design & Manufacturing

Electrical, Electronics, Medical Electronics & Telecommunication

Automotive Technology

Marine Engineering Technology

Aviation & Aircraft Technology

Quality Engineering, Facilities Maintenance and Industrial Logistic

Medical Sciences Technology

Accounting, Entrepreneurship, Islamic Finance, Marketing & International Business

www.unikl.edu.my

Apply now and register to enjoy acceptance fees waiver
Financial assistance will be arranged for those eligible



Research that Transforms Lives

Biotechnology for food security

"State of the art genetic technology has been developed and successfully applied to corn production improving its: yield, adaptation to climate change and nutritional quality. In the other hand, applying sustainable biotech we have increased food security characteristics for the safe storage of seeds and grains preventing new diseases of the XXist century."

Silverio García, Tec de Monterrey Researcher



**Tecnológico
de Monterrey**

CONTACT

Email: research.mty@servicios.itesm.mx
www.tec.mx/en

LEARN MORE ABOUT THE RESEARCH PROJECTS THAT ARE TRANSFORMING LIVES:

www.tec.mx/en/where-research-carried-out



#178

Global
Worldwide

#5

in Latin
America

#52

in Employability



We have
decreased up to
40% corn
losses by providing
safe storage

QS World University Rankings Arab Region 2019: Overview



Selina Griffin
Rankings Manager
QS Quacquarelli Symonds

This 2019 edition of the QS World University Rankings: Arab Region offers readers a number of exciting developments. For the first time, we have ranked more than 100 institutions, with 122 universities from the region securing a rank this year. We have also revised the methodology and introduced a new indicator.

The top 10 for 2019 has King Fahd University of Petroleum & Minerals (KFUPM) regain top spot, with last year's regional leader, American University of Beirut, returning to second place. There are some other minor movements among the top 10, but there is no change regarding the band's constituent institutions, and Saudi Arabia continues to have three institutions represented. Its universities occupy the first, third (King Abdul Aziz University) and fourth (King Saud University) spots, with the United Arab Emirates represented by two (United Arab Emirates University, a non-mover at number five and American University of Sharjah, 7th gaining one rank).

In this newly extended table, Saudi Arabia still possesses 22 ranked institutions. However, Egyptian higher education makes noteworthy gains, with 20 institutions featured (up from 13 in the 2018 edition). These gains are

facilitated both by some new entries, and the extended table length. Jordan offers 14 institutions (one more than last year) and one, University of Jordan, in the top ten: it remains 9th. The United Arab Emirates is next-most-represented, with 13 institutions in the table (also up one from last year), eight of which are in the top 50.

The top performers in the Academic Reputation indicator are, perhaps unsurprisingly, also the top performers in the whole table, with Cairo University (a non-mover at 11th place) remaining the region's most academically-renowned institution.

In the Employer Reputation indicator dataset, the top performers include three universities from Egypt: Cairo University, Alexandria University (up three places to ranked 12th overall) and Ain Shams University (up four places to ranked 13th overall). Lebanese American University (16th) and American University in Dubai (23rd, up three places) achieve top-ten scores for Employer Reputation but both fail to achieve top-20 scores for Academic Reputation.

Over half of the top ten spots in the Faculty/Student Ratio dataset are occupied by universities in Saudi Arabia and Iraq. Four of these universities

THINK BIG.

To us, **THINK BIG** means more than **11,500 students** from over 70 countries worldwide, **100 diverse programmes of study**, including 8 master degrees in cooperation with other leading universities, and **25 research centres** engaged in cutting-edge research. It means being the first university in Europe to achieve **5 QS Stars** for distance learning education, and being recognised as **global leaders in blockchain education**. It means a **leading Medical School** in collaboration with St George's, University of London, offering fully integrated clinical training programmes spanning three continents. But it also means an unforgettable student experience, at the most dynamic, vibrant and **ever-expanding urban campus** in Cyprus.

Welcome to the largest university in Cyprus.

Welcome to the University of Nicosia.

46 Makedonitissas Avenue, P.O. Box 24005, 1700 Nicosia,
Tel. (main): 22841500
Tel. (admissions): 22841928
E-mail: admissions@unic.ac.cy
unic.ac.cy

 [UniversityofNicosia](https://www.facebook.com/UniversityofNicosia)
 [Uni_of_Nicosia](https://twitter.com/Uni_of_Nicosia)
 [universityofnicosia](https://www.instagram.com/universityofnicosia)
 [UniversityNicosia](https://www.youtube.com/UniversityNicosia)



UNIVERSITY of
NICOSIA



(King Fahd University of Petroleum & Minerals, King Abdul Aziz University, King Saud University and Khalifa University) are also in the top five for their papers per faculty performance: a powerful combination of high commitment to teaching provision and research productivity. It is worth pointing out here that the weighting for Faculty/Staff ratio has reduced in this edition of the ranking from 20% to 15% in order to create room for our new indicator.

The United Arab Emirates dominates the top positions in both the international student ratio and international faculty ratio indicators, with many of the top positions for this indicator taken by universities outside of the overall top 20. Bahrain's Arabian Gulf University also appears here as one of the region's most international universities.

Our new indicator, International Research Network, is characterized by strong performances from universities in Saudi Arabia and the United Arab

Emirates, which possess three and two universities in the top ten for this indicator respectively. However, we also see some less-represented locations; Qatar University ranks well here (again, Qatar's only entry in the whole table), Sultan Qaboos University (Oman) takes the third spot in this indicator, while Kuwait University is also in the top ten. The purpose of the International Research Network indicator is to explore the degree of international diversity present in each university's research collaboration network. Thus, the more locations in which a university possesses a research partner (at least three during the present publishing cycle, which, for the 2019 rankings, is 2012 through 2016) the better they will perform in this indicator. By examining both research and internationalization, we are able to observe not just that internationalization is taking place, but also the extent of this diversity. In order to accommodate this new indicator, weighted at 10%, we reduced the weighting of Faculty/Student ratio from 20% to 15%, and Web Impact, down from 10% to 5%.

We hope that this edition of the QS World University Rankings: Arab Region, offers compelling insights. As always, it is important to note that a declining rank does not denote a declining performance in absolute terms; rather, universities are continuing to improve on a lot of the measures that QS seek to evaluate through these rankings, which catalyses and illuminates increasing competition and, hopefully, increasing quality for students.

The University of Surrey is a

global community

of ideas and people, dedicated to

LIFE-CHANGING EDUCATION AND RESEARCH

INSPIRING RESEARCH

We've won The Queen's Anniversary Prize for Higher and Further Education on four occasions. The latest for Food and Nutrition.

Our 5G Innovation Centre is the largest UK academic research centre dedicated to developing wireless communications fit for the future.

We are pioneering new approaches to the removal of space debris at Surrey Space Centre.

Our Centre for Vision Speech and Signal Processing (CVSSP) has been pioneering artificial intelligence research for over 30 years. Focusing on AI for Machine Perception, CVSSP is delivering cutting edge research in robotics, autonomous vehicles, biometrics and the creative industries.

We are taking a leading role in the emerging area of Blockchain research through over £3m of UKRI investment drawing together expertise from our GCHQ accredited Centre for Cyber Security, the Centre for Digital Economy (CoDE) within the Surrey Business School, and technical expertise from both CVSSP and 5G.

INSPIRING STUDENTS

- Teaching Excellence Framework (TEF Gold)
- An international community of staff and students from 120 countries
- Global placement opportunities for a Professional Training Year
- 93% of graduates employed after 6 months
- Ranked 121st -130th in QS World Graduate Employability Rankings 2018
- 4th in the World for Hospitality and Leisure Management in QS World University Rankings 2018
- Four Oscars, seven Grammys, and twelve BAFTAs awarded to our alumni



▶▶▶ Find out more, visit:
surrey.ac.uk



Arab Region

		Location	Size	Focus	Res.	Age	Status	Academic Reputation	Employer Reputation	Faculty Student	Papers per Faculty	Citations per Paper	Staff with PhD	International Faculty	International Students	International Research Network	Web Impact	Overall
1	KING FAHD UNIVERSITY OF PETROLEUM & MINERALS (KFUPM)	SA	M	CO	VH	4	A	99.6	95.1	99.9	100	98.7	87	93.7	59.7	96.8	96.7	100
2	AMERICAN UNIVERSITY OF BEIRUT (AUB)	LB	M	FC	HI	5	B	98.7	100	93.6	97.7	92.7	98.4	51.6	84.5	96.3	99.8	99.6
3	KING ABDUL AZIZ UNIVERSITY (KAU)	SA	XL	FC	VH	4	A	99.7	91.9	95.3	99.8	100	87.2	68.7	82	100	99.9	99.1
4	KING SAUD UNIVERSITY (KSU)	SA	XL	FC	VH	4	A	99.7	93.8	98.4	99.2	87.1	100	55.1	28.2	100	100	98.2
5	UNITED ARAB EMIRATES UNIVERSITY	AE	M	FC	HI	3	A	95.9	89.4	87.8	95.7	83.2	100	96.9	81.2	97.5	90.2	95.8
6	QATAR UNIVERSITY	QA	M	FC	HI	3	A	87.1	84.8	90.7	97.9	84.3	99.4	97.2	99.8	98.8	91.5	93.4
7	AMERICAN UNIVERSITY OF SHARJAH	AE	M	FC	HI	2	B	95.4	99.1	49.4	99.1	85.4	100	100	100	77.7	60.8	89
8	AMERICAN UNIVERSITY IN CAIRO	EG	M	CO	HI	4	B	99.1	94.5	78.9	84.1	41.8	93.5	51.5	13.3	52.7	99.6	86.3
9	UNIVERSITY OF JORDAN	JO	XL	FC	MD	4	A	97.9	97.9	31.6	60.8	54	100	15.5	60.1	96.2	99.5	83.8
10	SULTAN QABOOS UNIVERSITY	OM	M	FC	HI	3	A	71.7	70.6	92.7	98.6	66.7	100	76.7	13.1	99.5	78.6	81.8
11	CAIRO UNIVERSITY	EG	XL	FC	VH	5	A	100	99.9	42.6	36.1	58.3	41.5	2.1	18	99.2	99.6	81.4
12	ALEXANDRIA UNIVERSITY	EG	XL	FC	HI	4	A	94.7	96.6	16.4	20.9	58.7	79.8	1.7	7.5	93.3	89.4	74.8
13	AIN SHAMS UNIVERSITY	EG	XL	FC	HI	4	A	92.7	97.6	40.6	24	48.9	48.3	13.1	10.1	94.9	50.1	74.7
14	JORDAN UNIVERSITY OF SCIENCE AND TECHNOLOGY	JO	L	CO	HI	3	A	90.1	95	46.5	40.7	63.4	25.5	7.4	76.4	55.1	54.6	72.3
15	KHALIFA UNIVERSITY	AE	S	SP	VH	2	A	50.4	47.3	98.6	100	98.2	100	99.1	79	98.9	19.8	72.1
16	LEBANESE AMERICAN UNIVERSITY	LB	M	FC	MD	4	B	65.8	95.7	58	39	88.2	66	59.9	73.8	49.2	70.7	71.5
17	UNIVERSITY OF BAGHDAD	IQ	XL	FC	MD	4	A	94.2	50.9	80.8	9.2	44.5	79.7	1.2	1.4	58.2	51.4	68.1
18	UNIVERSITY OF SHARJAH	AE	L	CO	MD	2	B	69.6	85.1	16.4	57.2	46.6	94.9	99.8	100	67.4	56.8	67.2
19	KUWAIT UNIVERSITY	KW	XL	FC	MD	4	A	73.4	69.7	15.9	61.4	81.2	99.8	27.4	58.8	97.2	44.3	66.9
20	UNIVERSITÉ SAINT-JOSEPH DE BEYROUTH	LB	M	FC	MD	5	B	60.3	92.9	94	27	53.3	7	30.5	25	32.3	93.1	66.7
21	UMM AL-QURA UNIVERSITY (UQU)	SA	XL	FC	MD	4	A	57.4	35.8	90.2	19	47.3	17	72.4	53.3	77	96.4	59.8
22	ZAYED UNIVERSITY	AE	M	CO	HI	2	A	46.3	77.4	57.2	49.7	49.9	73.1	99.5	9.1	44.2	49.3	58.2
23	AMERICAN UNIVERSITY IN DUBAI	AE	S	FO	MD	2	B	48.1	97.4	45.6	42.5	10.1	81	100	100	11.2	27.1	56.9
24	KING KHALID UNIVERSITY	SA	XL	FC	MD	2	A	48.8	21.9	98.5	10.8	45.8	85.5	87.4	46.3	61.9	48.3	54.8
25	UNIVERSITY OF BAHRAIN	BH	L	CO	MD	3	A	46.8	89.9	14.8	28.1	81.8	40.2	64.7	45.3	58.7	34.8	54
26	LEBANESE UNIVERSITY	LB	S	FC	HI	4	A	63.5	91.6	9.1	9.9	36.3				49.8	96.6	52.7
27	ABU DHABI UNIVERSITY	AE	S	FO	HI	2	C	36.6	73.7	15.1	78.2	52.7	95.6	100	100	25.1	27.5	49.9
28	KING FAISAL UNIVERSITY	SA	XL	FO	HI	3	A	77.2	27.7	24.6	21.7	58	12.3	77.2	6.1	56.3	61.9	49.5
29	MANSOURA UNIVERSITY	EG	XL	FC	HI	3	A	73.2	20.4	7.5	34.9	57.2	32.3		11	84.9	82.4	47.9
30	UNIVERSITY OF KUFA	IQ	L	FC	MD	3	A	66.2	54.9	74	4.6	11.6	6.2	1.2	1.5	15.8	24.6	47.6
31	ARABIAN GULF UNIVERSITY	BH	S	CO	MD	3	A	33.7	16.9	98.5	41.6	53.4	100	72.9	100	22.2	18.2	47.1
32	ASSIUT UNIVERSITY	EG	XL	FC	HI	4	A	70.2	22.6	21.2	26.2	70.2	7.5		3.2	86.6	50.8	46.9
33	YARMOUK UNIVERSITY	JO	XL	FC	MD	3	A	65.1	44.4	5.7	31.4	26.1	99.5	4	35.8	35.2	70	46.8
34	HOLY SPIRIT UNIVERSITY OF KASLIK	LB	M	FC	LO	4	A	26.8	67.2	77.2	11.1	13.2	94.7	68	63.8	9.6	22.4	46
35	NOTRE DAME UNIVERSITY - LOUAIZE (NDU)	LB	M	CO	MD	3	B	51.8	64.2	31.6	27.8	65.8	17.2	39.2	35.9	21.3	23.5	45.4
36	UNIVERSITY OF BALAMAND	LB	S	CO	MD	3	B	25.7	60.2	99.7	15	39.2	23.2	4.7	35.1	15.9	27.9	44.1
37	UNIVERSITY OF BABYLON	IQ	L	FC	MD	3	A	59.4	24.9	57.4	12.6	34.5	21.8		1	32.2	79.3	43.6
38	THE HASHEMITE UNIVERSITY	JO	L	FC	MD	3	A	40.2	41.2	7	62.8	50.2	55.9	8	26.3	87.9	36.5	42.8
39	ALFAISAL UNIVERSITY	SA	S	CO	HI	2	B	10.9	9.8	67.4	87.9	99.6	81.5	94.2	99.1	52.6	32	41.9
40	UNIVERSITY OF BASRAH	IQ	XL	FC	MD	4	A	61.5	17.5	46.2	11.2	47.9	24.9	1.1	1	42.5	55.4	41.6
41	AL AZHAR UNIVERSITY	EG	XL	CO	HI	3	A	57.8	19.6	12.3	11.7	51.9	100		19.5	58.7	22.6	40.2
42	CANADIAN UNIVERSITY OF DUBAI	AE	S	FO	MD	2	C	26.5	54.9	44.4	22		92.9	100	100	8.1	11.6	39.1
43	MUSTANSIRIYAH UNIVERSITY	IQ	XL	FC	MD	4	A	43.6	23.1	58	5.5	27	80.2	1	1.1	39.2	23.7	38.5
44	AL NAHRAIN UNIVERSITY	IQ	S	CO	HI	3	A	47	16.5	100	13.7	13	23	3.1	1.8	7.9	14	37.8
45	APPLIED SCIENCE UNIVERSITY OF BAHRAIN	BH	S	FO	LO	2		20.2	48.5	60.3	4.5		100	95.6	64.9		39.5	37.3
46	AL AKHAWAYN UNIVERSITY IFRANE	MA	S	FO	HI	3	A	20	61.7	31.3	54.6	32.4	80.9	51	6.8	7.9	45.6	37.2
47	BIRZEIT UNIVERSITY	PS	L	CO	MD	4	B	43.7	32	16.4	17.3	73.5	26.1	9.2	16.7	27.2	93.2	37.1
48	UNIVERSITÉ DES SCIENCES ET DE LA TECHNOLOGIE HOUARI-BOUMEDIENE	DZ	XL	FO	VH		A	28.4	39.5	40.1	46.5	30.3	2.7	1	2.4	52.4	74.6	36.7
49	PRINCE SULTAN UNIVERSITY	SA	S	SP	LO	2	B	21.3	31.3	63.9	31.8	41.1	4.7	93.1	53.1	40.1	22.8	36.2
50	AN-NAJAH NATIONAL UNIVERSITY	PS	L	FC	MD	4	A	28.1	17.6	20.5	21.3	42.3	66	16.4	38.5	73.5	88.8	35.9
51-60	AHLIA UNIVERSITY	BH	S	FO	MD	2		-	38.9	61.3	-	-	85.5	71.2	81.3	-	-	33.1 - 35.7
51-60	AJMAN UNIVERSITY	AE	M	CO	MD	3	C	-	44.2	-	-	39.6	83.5	99.9	100	-	31	33.1 - 35.7
51-60	DAMASCUS UNIVERSITY	SY	S	FC	HI	4	A	38.2	65.2	-	-	-	-	-	-	36	52.6	33.1 - 35.7
51-60	GULF UNIVERSITY FOR SCIENCE AND TECHNOLOGY (GUST)	KW	S	FO	HI	2		-	49.9	-	56	43.5	88.8	96.4	44.8	-	41.2	33.1 - 35.7
51-60	HELWAN UNIVERSITY	EG	XL	CO	HI	3	A	33.3	-	-	18.9	56.3	53.1	-	-	84	69.9	33.1 - 35.7
51-60	HIGHER COLLEGES OF TECHNOLOGY	AE	L	CO	MD	3	A	-	55.7	50.9	-	33.2	-	99.7	32.6	29.1	62.4	33.1 - 35.7
51-60	IMAM ABDULRAHMAN BIN FAISAL UNIVERSITY (IAU) (FORMERLY UNIVERSITY OF DAMMAM)	SA	L	FC	MD	3	A	-	-	84.1	-	-	-	70.4	12.4	57.7	-	33.1 - 35.7
51-60	PRINCESS SUMAYA UNIVERSITY FOR TECHNOLOGY	JO	S	FO	HI	3	B	-	41.1	20.6	63.1	44	100	32.8	36.9	-	30.9	33.1 - 35.7
51-60	UNIVERSITÉ MOHAMMED V DE RABAT	MA	XL	CO	HI	3	A	64	-	-	71.5	-	-	-	-	74.3	23.2	33.1 - 35.7
51-60	UNIVERSITY OF KHARTOUM	SD	S	FC	HI	4	A	-	53.4	-	-	36	-	-	-	65.3	98.6	33.1 - 35.7



Create | Innovate | Empower

A leading institution of higher education in the United Arab Emirates and across the region, Zayed University is distinguished for its dedication to research and scholarship that seeks to address the needs of a culturally diverse, technologically advanced, and increasingly global environment. We take pride in providing world-class undergraduate and graduate programs to both national and international students across two modern campuses in Abu Dhabi and Dubai.

Some of our research facilities include:

- Assistive Technology Resource Centers
- Cognition & Neuroscience Research Laboratory
- Bloomberg Virtual Trading Labs and CFA Training
- 3D Printing & Robotics Fabrication Laboratory
- Hyperspectral & Instrumentation Laboratories
- Cyber Security and Digital Forensics Laboratories
- Zayed University Center for Educational Innovation
- Marine and Coral Propagation Laboratory



A Community of
500 Researchers

90% International
Faculty from **60** Countries



Accredited by
Middle States Commission on Higher Education



Arab Region

	Location	Size	Focus	Res.	Age	Status	Academic Reputation	Employer Reputation	Faculty Student	Papers per Faculty	Citations per Paper	Staff with PhD	International Faculty	International Students	International Research Network	Web Impact	Overall		
61-70	AL QUDS UNIVERSITY THE ARAB UNIVERSITY IN JERUSALEM	PS	M	FC	MD	3	A	-	-	30.3	15.4	78.5	40.4	17.9	13.4	35.4	46	30.1 - 32.5	
61-70	AL-IMAM MOHAMED IBN SAUD ISLAMIC UNIVERSITY	SA	XL	CO	MD	4	A	-	-	36.4	-	48.7	-	25.8	9	60.8	49.8	30.1 - 32.5	
61-70	AMERICAN UNIVERSITY OF RAS AL KHAIMAH (AURAK)	AE	S	CO	MD	1	A	-	-	80.1	55.3	-	94.6	100	100	-	47.4	30.1 - 32.5	
61-70	GERMAN JORDANIAN UNIVERSITY	JO	S	FO	HI	2	A	-	43.9	52.3	32	54.2	-	25.6	56.8	-	-	30.1 - 32.5	
61-70	ISLAMIC UNIVERSITY IN MADINAH	SA	L	SP	LO	4	A	-	-	17.7	-	-	93.7	63.3	100	-	44.7	30.1 - 32.5	
61-70	ISLAMIC UNIVERSITY OF GAZA	PS	L	FC	LO	3	A	34	-	-	24.2	92.4	88	-	24.9	69.1	-	30.1 - 32.5	
61-70	NAJRAN UNIVERSITY	SA	L	FC	MD	2	A	-	-	69.3	20	100	91.3	78.9	7.8	34.6	42	30.1 - 32.5	
61-70	TANTA UNIVERSITY	EG	XL	CO	HI	3	A	-	-	-	22.1	75.2	64.5	-	79.4	32.8	-	30.1 - 32.5	
61-70	UNIVERSITÉ DE CARTHAGE	TN	XL	FO	HI	3	A	-	-	58.9	29.9	32.5	100	3.3	-	68.2	-	30.1 - 32.5	
61-70	UNIVERSITÉ DE TUNIS EL MANAR	TN	XL	FC	MD	2	A	40.6	-	40.9	25.2	-	52.8	-	-	57.6	-	30.1 - 32.5	
61-70	UNIVERSITY OF TECHNOLOGY - IRAQ	IQ	M	SP	LO	3	A	-	-	99.9	19.7	38.4	-	-	-	36	-	30.1 - 32.5	
71-80	ARAB ACADEMY FOR SCIENCE, TECHNOLOGY AND MARITIME TRANSPORT	EG	L	FO	HI		A	-	-	73.4	16.9	-	-	2.5	29	-	57.7	28.3 - 29.9	
71-80	BEIRUT ARAB UNIVERSITY	LB	M	FC	MD	4	B	-	40.6	16.5	28.8	35.4	34.5	43.1	65.9	-	26.8	28.3 - 29.9	
71-80	SUDAN UNIVERSITY OF SCIENCE AND TECHNOLOGY	SD	XL	CO	MD	3	A	-	-	75.1	-	-	-	-	6.8	23.5	34.5	28.3 - 29.9	
71-80	SUEZ CANAL UNIVERSITY	EG	XL	FC	MD	3	A	-	-	40	18.9	67.4	-	-	-	69.1	-	28.3 - 29.9	
71-80	UNIVERSITÉ HASSAN II DE CASABLANCA	MA	XL	FC	MD	2	A	44.4	-	-	24.2	-	72.9	-	6.9	55.1	26.2	28.3 - 29.9	
71-80	UNIVERSITY OF JEDDAH	SA	M	FC	MD	1	A	-	-	83.6	-	31	89.5	86.6	45.9	21.7	38.6	28.3 - 29.9	
71-80	UNIVERSITY OF KERBALA	IQ	L	FC	LO	2	A	54.9	-	31.5	-	-	-	-	-	-	-	28.3 - 29.9	
71-80	UNIVERSITY OF NIZWA	OM	S	CO	HI		B	-	-	31.3	41.1	75.6	-	97.8	19.7	32.7	-	28.3 - 29.9	
71-80	ZAGAZIG UNIVERSITY	EG	XL	FC	HI	3	A	-	-	21.2	21	56.7	-	-	6.1	74.8	47.5	28.3 - 29.9	
81-90	AL BALQA APPLIED UNIVERSITY	JO	XL	FC	MD	2	A	-	-	-	22.7	37.3	43.9	11.8	12.4	35.2	72.6	25.5 - 27.4	
81-90	AMERICAN UNIVERSITY OF SCIENCE AND TECHNOLOGY	LB	S	FO	MD	3		-	67.3	27.3	-	-	-	5.9	40	-	32.4	25.5 - 27.4	
81-90	BENHA UNIVERSITY	EG	XL	FC	MD	3	A	-	-	-	15	58.4	60.3	-	25.4	58.8	78	25.5 - 27.4	
81-90	FAYOUM UNIVERSITY	EG	XL	FC	MD	2	A	-	-	47.6	-	76.7	48.1	-	-	44.7	56.2	25.5 - 27.4	
81-90	MINIA UNIVERSITY	EG	XL	CO	HI	3	A	-	-	31.4	19.3	52.7	68.4	-	-	59.3	29.8	25.5 - 27.4	
81-90	PHILADELPHIA UNIVERSITY AT JORDAN	JO	M	CO	MD	3	C	-	-	20	21.2	32.7	85.6	25.6	99.9	-	66.4	25.5 - 27.4	
81-90	PRINCE MOHAMMAD BIN FAHD UNIVERSITY	SA	S	SP	LO	2	A	-	-	21.9	34.9	43.1	59.3	99.5	41.8	22.6	-	25.5 - 27.4	
81-90	PRINCE SATTAM BIN ABDULAZIZ UNIVERSITY	SA	L	FC	MD	1	A	-	-	65.7	18	-	-	70	6.1	62.5	-	25.5 - 27.4	
81-90	QASSIM UNIVERSITY	SA	XL	FC	MD	2	A	-	-	30.1	-	32.3	-	66.3	6.2	46.1	59.7	25.5 - 27.4	
81-90	UNIVERSITÉ DE MONASTIR	TN	L	CO	HI	2	A	-	-	81.3	43.2	30.9	31	-	-	44.3	-	25.5 - 27.4	
81-90	UNIVERSITÉ DE SOUSSE	TN	L	FC	MD	2	A	-	-	63.5	-	64.1	-	-	-	33.4	-	25.5 - 27.4	
91-100	AL AIN UNIVERSITY OF SCIENCE AND TECHNOLOGY	AE	S	FO	MD	2		-	-	-	21.6	-	100	100	100	-	-	22.8 - 25.2	
91-100	AL ZAYTOONAH UNIVERSITY	JO	M	CO	MD	3		-	-	16.8	19.4	94.7	85.9	16.6	88.6	-	-	22.8 - 25.2	
91-100	BRITISH UNIVERSITY IN EGYPT	EG	M	CO	MD	2	C	-	-	53.2	20.4	41.6	-	-	10.6	-	-	22.8 - 25.2	
91-100	CADI AYYAD UNIVERSITY	MA	XL	FC	MD	3	A	-	-	-	44.9	49.8	100	-	-	62.5	26.6	22.8 - 25.2	
91-100	DAR AL-HEKMA UNIVERSITY	SA	S	SP	LO	2	B	-	-	86.5	-	-	-	79.6	99.3	-	-	22.8 - 25.2	
91-100	PRINCESS NOURAH BINT ABDULRAHMAN UNIVERSITY	SA	XL	CO	LO	3	A	-	-	59.5	-	-	25.4	32.5	31	-	-	22.8 - 25.2	
91-100	TAIBAH UNIVERSITY	SA	XL	FC	MD	2	A	-	-	-	20.8	37.8	26.9	64.5	14.8	61.6	37.6	-	22.8 - 25.2
91-100	UNIVERSITÉ ABOU BEKR BELKAID TLEMCEM	DZ	XL	FC	MD	2	A	-	-	-	27.2	-	92.6	-	-	27.5	53.3	-	22.8 - 25.2
91-100	UNIVERSITY OF ANBAR	IQ	L	CO	MD	3	A	-	-	54.5	-	67.9	57.5	-	-	21.9	-	-	22.8 - 25.2
101-110	APPLIED SCIENCE PRIVATE UNIVERSITY - JORDAN	JO	M	CO	MD	3	C	-	-	39.5	23.5	42.2	37.7	18.8	99.8	-	-	-	21.4 - 22.6
101-110	BENI-SUEF UNIVERSITY	EG	XL	FC	MD	2		-	-	-	25.5	70.3	33.1	-	-	65.6	-	-	21.4 - 22.6
101-110	EFFAT UNIVERSITY	SA	S	FO	MD	2	B	-	-	33.6	21.3	-	100	97.8	51.6	-	-	-	21.4 - 22.6
101-110	KAFRELSHEIKH UNIVERSITY	EG	XL	CO	MD	2	A	-	-	-	24.1	91.3	53	-	-	47.4	62.9	-	21.4 - 22.6
101-110	PETRA UNIVERSITY	JO	M	CO	MD	3	C	-	-	-	20.8	-	96	14.5	93.9	-	44.9	-	21.4 - 22.6
101-110	SALAHADDIN UNIVERSITY - ERBIL	IQ	L	FO	MD		A	-	-	83.7	-	-	-	-	-	21.6	-	-	21.4 - 22.6
101-110	TAIF UNIVERSITY	SA	XL	FC	MD	2	A	-	-	30.4	28.4	33	-	60.9	7.6	59.3	25	-	21.4 - 22.6
101-110	UNIVERSITÉ DE BEJAIA	DZ	L	FC	MD		A	-	-	35.6	22.5	73	-	-	-	24.7	80.8	-	21.4 - 22.6
101-110	UNIVERSITÉ DE TUNIS	TN	L	FO	HI	4	A	39.9	-	-	31.3	34.2	-	2.7	-	26	-	-	21.4 - 22.6
101-110	UNIVERSITY OF SULAIMANI	IQ	L	CO	MD	4	A	-	-	65.8	-	-	-	3.6	-	23.8	-	-	21.4 - 22.6
111-120	AL ALBAYT UNIVERSITY	JO	L	CO	MD	2	A	-	-	-	51.9	-	100	-	32.7	-	27.7	-	18.9 - 21.2
111-120	AL HUSSEIN BIN TALAL UNIVERSITY	JO	M	FC	MD	2	A	-	-	-	40.5	60	100	-	-	29.3	-	-	18.9 - 21.2
111-120	AMERICAN UNIVERSITY IN THE EMIRATES	AE	S	FO	LO	2	C	-	-	27.9	-	-	98.4	100	100	-	25.8	-	18.9 - 21.2
111-120	CALEDONIAN COLLEGE OF ENGINEERING	OM	S	FO	MD	2		-	-	59.8	-	-	-	98.8	44.7	-	-	-	18.9 - 21.2
111-120	GERMAN UNIVERSITY IN CAIRO	EG	S	CO	HI	2		-	43.8	-	-	42.7	-	-	-	-	-	28.7	18.9 - 21.2
111-120	MAJMAAH UNIVERSITY	SA	L	FC	LO	1	A	-	-	74.1	-	36.1	20.8	85.8	8	-	50.3	-	18.9 - 21.2
111-120	MUTAH UNIVERSITY	JO	L	FC	LO		A	-	-	-	22.7	-	100	7.8	38.2	-	23.8	-	18.9 - 21.2
111-120	RAFIK HARIRI UNIVERSITY	LB	S	CO	MD	2	B	-	-	46.5	44.9	-	70.1	4.9	8.6	-	-	-	18.9 - 21.2
111-120	SOHAR UNIVERSITY	OM	M	FO	MD	2		-	-	-	36	47.8	-	92.3	7.1	-	-	-	18.9 - 21.2
111-120	SOUTH VALLEY UNIVERSITY	EG	XL	FO	HI			-	-	-	33	66.2	-	-	-	67.2	25.2	-	18.9 - 21.2
111-120	UNIVERSITÉ DJILLALI LIABES	DZ	L	FC	MD	3	A	-	-	26.7	34.5	92.2	18.7	-	6	24	63.9	-	18.9 - 21.2
111-120	UNIVERSITÉ MENTOURI DE CONSTANTINE	DZ	S	CO	VH	3	A	-	-	-	-	-	-	-	-	58.7	74.4	-	18.9 - 21.2

Beyond The Future

KOREA UNIVERSITY



LIBERTAS
JUSTITIA
VERITAS



1

The only
Korean university
in the Universitas 21

86th

QS
World University
Rankings 2019

113th

Anniversary of
Korea University's
foundation

1,039

Number of
international
partner universities

1,779

Number of
students who enrolled in
internal Summer Campus

JOIN US.

Graduate School Admission Fall 2019
<http://graduate2.korea.ac.kr>



The things we do here **make** **a difference** **out there.**

Our researchers are developing solutions to some of the most pressing problems facing the world today. We are renowned for the work we do in our core areas of ageing and health, cities, culture and creative arts, data, and energy.

From Newcastle. For the world.

ncl.ac.uk/from



**QUEEN'S
UNIVERSITY
BELFAST**

**MAKING A
DIFFERENCE
THROUGH OUR
IMPACT IN THE
WORLD**

qub.ac.uk



**RUSSELL
GROUP**